

# Fusion Newsletter OCT 2020



## BELONGINGS

Now we are coming into the Winter months, we understand your child/ren will be having extra items such as gloves, scarf etc... Please make sure that all belongings are labelled and it is your child/ren responsibility to take care of them (even water bottles...)

Don't forget that when the clocks go back on Sunday 25<sup>th</sup> October- the nights will be getting darker. The gate at the top of Dark Lane will be open so you can safely walk on the path by the top car park entrance.

We will still be going outside after dinner but using torches as well as hi-vis jackets.

Please be careful driving up Dark lane and be courteous of other drivers as we have had lots of complaints of reckless driving

## Invoicing

Please ensure that each payment has your family reference number on ie "Wilkins 007". A gentle reminder that invoices are on the 5<sup>th</sup> of the month, in advance, ie November 2020 invoice is due 5<sup>th</sup> November 2020. Please ensure payment is made on the 5<sup>th</sup> of the month.

Please let us know if your child is not at school. It is crucial you inform us if your child is **NOT** attending Fusion.

COVID-19 vs. FLU vs. COLD			
SYMPTOMS	COVID-19*	FLU	COLD
SYMPTOMS ONSET AFTER EXPOSURE	2 - 14 DAYS	1 - 4 DAYS	1 - 3 DAYS
Fever	Common	Common	Rare
Cough	Common Usually dry	Common	Mild to moderate
Fatigue	Common	Common	Mild
Shortness of breath/difficulty breathing	Common Severe cases may develop pneumonia	Rare	Rare
Body aches	Sometimes	Common	Mild
Sore throat	Sometimes	Sometimes	Common
Headache	Sometimes	Common	Rare
Digestive issues	Sometimes	Sometimes	Rare
Chills	Sometimes May experience repeated shaking with chills	Sometimes	Rare
New loss of smell and taste	Sometimes	Rare	Rare
Sneezing	Rare	Sometimes	Common
Runny or stuffy nose	Sometimes	Sometimes	Common

\*Information is still evolving. COVID-19 affects different people in different ways. Infected people have had a wide range of symptoms reported - from mild symptoms to severe illness. Contact your physician or the Centers for Disease Control website at www.CDC.gov for more and updated influenza and COVID-19 information.  
©2020 Zoom

Wow, what a term....!

Don't forget **Monday 2<sup>nd</sup> November** is an INSET Day meaning Fusion will not be operating as the Schools will be closed. We will be open on Tuesday 3<sup>rd</sup> November 2020 as normal.

We hope everyone has a lovely and safe Half Term

## AUTUMN TERM 3 WEEKLY MENU

Please have a look at the attached Menus for Fusion. Please be aware that Menu's can change at short notice if circumstances dictate. Alternatives will be provided for children with specific dietary requirements.

## Keeping In Touch

There are lots of ways for us to keep in touch.

**Website:** See below

**Facebook:** Search for Fusion Childcare Services

**By phone:**

**Abby/Becca (onsite)**

07796000413

**Tracy (offsite):**

07879811927

**E-mail-**

admin@fusionchildcareservices.co.uk

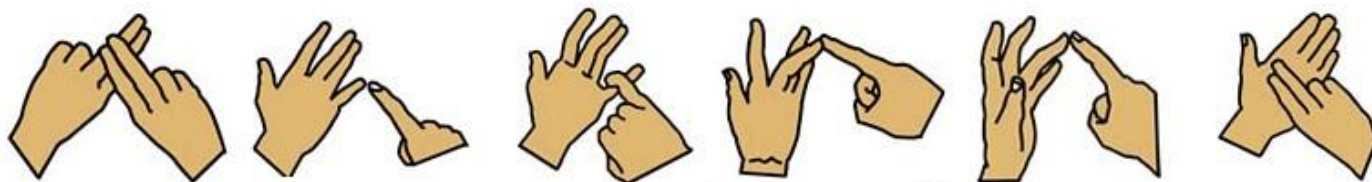
**In person!** We will always make time to speak to you at club!

As you know with the new arrangements its harder for us to speak to you in the setting but we're always available to email/text to have a chat.





# Fusion Newsletter OCT 2020



FUSION IN SIGN LANGUAGE

[WWW.SIGNLANGUAGEFORUM.COM/BSL/](http://WWW.SIGNLANGUAGEFORUM.COM/BSL/)

## OCTOBER...What have we been up too at Fusion?



Food Week  
Mental Health  
Week  
Wellbeing  
Week  
Black History  
Month  
Halloween  
World Smile  
Day  
Trips to the  
woods  
Autumn  
Activities  
Cooking and  
Baking

If you go down to the Spinney today.....you'll be in for a big surprise... how many fairy doors can you find???



## Happy HALLOWEEN

What spooky arts and crafts can you make this half term??

